


[Logout](#) Professor Danchin

[Home](#) [About Us](#) [FAQs](#) [Contact Us](#) [Site Map](#)
[Knowledge Centre](#)
[Congresses & Meetings](#)
[ESC Initiatives](#)
[ESC Constituent Bodies](#)
[News & Press](#)

My ESC

[Home > My ESC](#)
[My Abstracts](#)
[Add New Abstract](#)
[My Abstracts](#)

## » Step 4 of 4: Abstract Preview and Submission

\*denotes a mandatory field

[PRINT VERSION](#)

Please carefully read through your abstract before submitting it as you cannot change it afterwards.  
Pay special attention to the following:

- Spelling (your abstract MUST be written in English)
- Case (should be Sentence case: **only first letter of sentence and acronyms in uppercase**)
- Special characters (especially if you copied and pasted from another file, do your special characters show up as intended?)

If any changes are needed, please click one of the links to edit the correct section.

### Abstract Information

[Edit Information](#)

Abstract Submitter: Professor Danchin Nicolas - nicolasdanchin@yahoo.fr

Event: ESC Congress 2007

Title: Diabetic patients on sulfonylureas have mid-term outcomes similar to that of non diabetic patients after AMI.

Evaluation Topic: 06.09 - Diabetes

Acronym Abbreviation: FAST-MI

Acronym: Frech registry of Acute ST-elevation and non ST elevation Myocardial Infarction

On Behalf of: FAST-Mi investigators

Category: Bedside

Options: None

### Abstract Authors

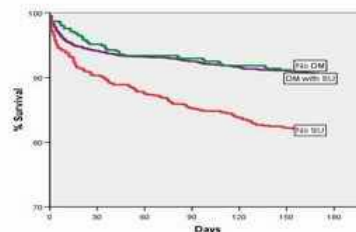
[Edit Authors](#)

M. Zeller<sup>1</sup>, A. Vahanian<sup>2</sup>, Y. Cottin<sup>1</sup>, T. Simon<sup>3</sup>, J. Berland<sup>4</sup>, P. Wyart<sup>5</sup>, P. Gueret<sup>6</sup>, E. Durand<sup>7</sup>, JP. Cambou<sup>3</sup>, N. Danchin<sup>3</sup> - (1) CHU Dijon, Dijon, France (2) CHU Bichat, Paris, France (3) Paris, France (4) Rouen, France (5) Villeneuve St Georges, France (6) Creteil, France (7) HEGP, Paris, France

### Abstract Content

**99%**
[Edit Content](#)

**Aim:** To assess 6-month mortality according to the presence of diabetes (DM) and its treatment in patients admitted for AMI.  
**Methods:** The FAST-MI registry included consecutive patients admitted for ST-elevation (STEMI) or non-STEMI  $\leq 48$  hours of symptom onset, in 223 French ICUs over 2 months from October 2005. In-hospital outcome was compared for all 2332 non diabetic patients and 1,310 known DM patients according to their antidiabetic treatment before admission: no SU (SU0, n=851), and use of SU (SU+, n=459).  
**Results:** Non diabetic patients were younger ( $66 \pm 15$  years) than SU+ ( $69 \pm 11$  years) or SU0 ( $70 \pm 11$  years) ( $p < 0.001$ ) and had a lower GRACE score on admission ( $163 \pm 38$  v.  $165 \pm 37$  v.  $170 \pm 38$ ,  $p < 0.001$ ). 6-month survival was significantly higher in non diabetic patients (91%) compared with DM patients (85%,  $p < 0.001$ ). Cox x-variate analysis found that presence of DM was independently associated with increased risk of 6-month death (OR 1.43; 95%CI: 1.13-1.81;  $p = 0.003$ ). When outcomes were analysed according to presence of DM and previous use of SU, 6-month survival was 91% in non diabetic patients, 90% in SU+, and 82% in SU0 ( $p < 0.001$ ). Using Cox analysis, SU0 patients had a significantly higher 6-month mortality than non diabetic patients (OR: 1.53; 95%CI: 1.21-1.93,  $p < 0.001$ ), while SU + diabetics had a survival similar to that of non diabetic patients (OR 0.79; 95% CI: 0.55-1.14,  $p = 0.21$ ). Use of insulin or metformin was not an independent predictor of 6-month survival.  
**Conclusion:** With the present management of AMI, diabetic patients as a whole remain at higher risk of 6-month mortality, compared with non diabetic patients. Among DM patients, however, those on sulfonylureas have a 6-month survival similar to that of non diabetic patients.



### » Rules and Regulations

I hereby certify that this abstract has not been previously presented at any international congress and that I have read and approved the [Abstract Submission Rules](#) of the Abstract Submission Service and the [Web Site Terms Conditions](#).

[Back](#)
[Submit](#)
[Quit](#)

### DATA PRIVACY STATEMENT

You have personal data, which is, according to the Law on data processing and Civil Liberties 78-17 of 6 January 1978 modified, registered with the European Society of Cardiology (ESC) and, where the congress is organised jointly with other organisations, may also be transferred to the congress co-organisers. The information you supply on this form is required to process it and it will be held in the customer data files of the organiser(s). It may be used for marketing and communication purposes by the organisers and their contractors only. You have the absolute right to access, amend and oppose any use of this personal data by writing to the ESC at the

*address mentioned below or by using the 'Contact Us' form [here](#),  
European Society of Cardiology - Data Privacy  
2035 Route des Colles - Les Templiers - BP 179 - 06903 Sophia Antipolis Cedex - France*

[ESC PRIVACY POLICY](#)

---

[Site Map](#) | [Contact Us](#) | [Terms & Conditions](#) | [Privacy](#)

Copyright © : 1997-2007 European Society of Cardiology. All rights reserved.